

South Platte Basin Surface Water Modeling Support

The Customer

Colorado Water Conservation Board (CWCB) [2013]

The Challenge

The Colorado Water Conservation Board (CWCB) has funded multiple projects to implement Colorado's Decision Support Systems (CDSS), including development of the South Platte Decision Support System (SPDSS). Earlier phases of SPDSS resulted in initial implementations of consumptive use (StateCU), water allocation (StateMod), and groundwater (MODFLOW) data sets. This project focuses on implementing production versions of StateCU and StateMod models for each South Platte sub-basin (except the Poudre River). Consulting teams are focusing on each basin and need CDSS software tool enhancements and support.

The Solution

Colorado's Decision Support Systems (CDSS) modeling software.

The Impact

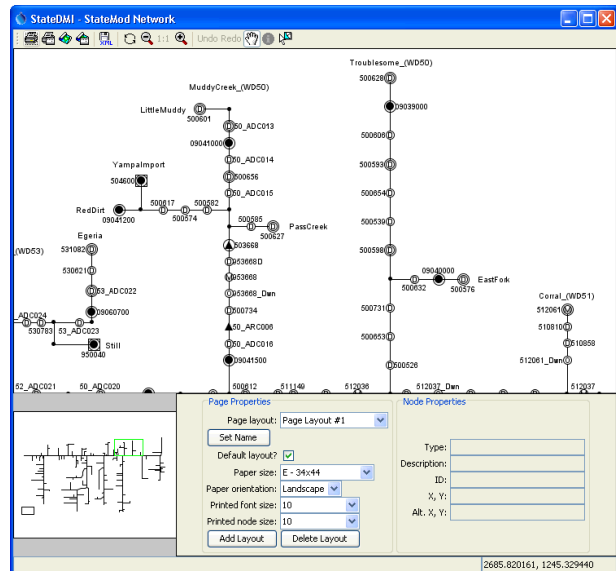
Integrated water supply planning models for the South Platte Basin will improve understanding of the impacts of new projects and system changes.

The Implementation

The Open Water Foundation, as a subcontractor to Brown and Caldwell, is providing software development and support services to all SPDSS contractors, including:

- Providing expertise in using the State of Colorado's HydroBase database and data contained in the database, including working with Colorado Division of Water Resources staff to troubleshoot database and software issues
- Enhancing the CDSS TSTool and StateDMI software to facilitate automated data processing and analysis using repeatable, transparent, and documented processes, including working with the project team to define software requirements and creating automated tests
- Troubleshooting software and data processing issues for the consulting team
- Contributing to technical discussions

OWF enhances software and creates software installers for the project team and provides follow-up support as needed to ensure that consultants are able to be efficient with the software tools. OWF has nearly twenty years of experience developing and supporting CDSS software components.



StateMod model network interface